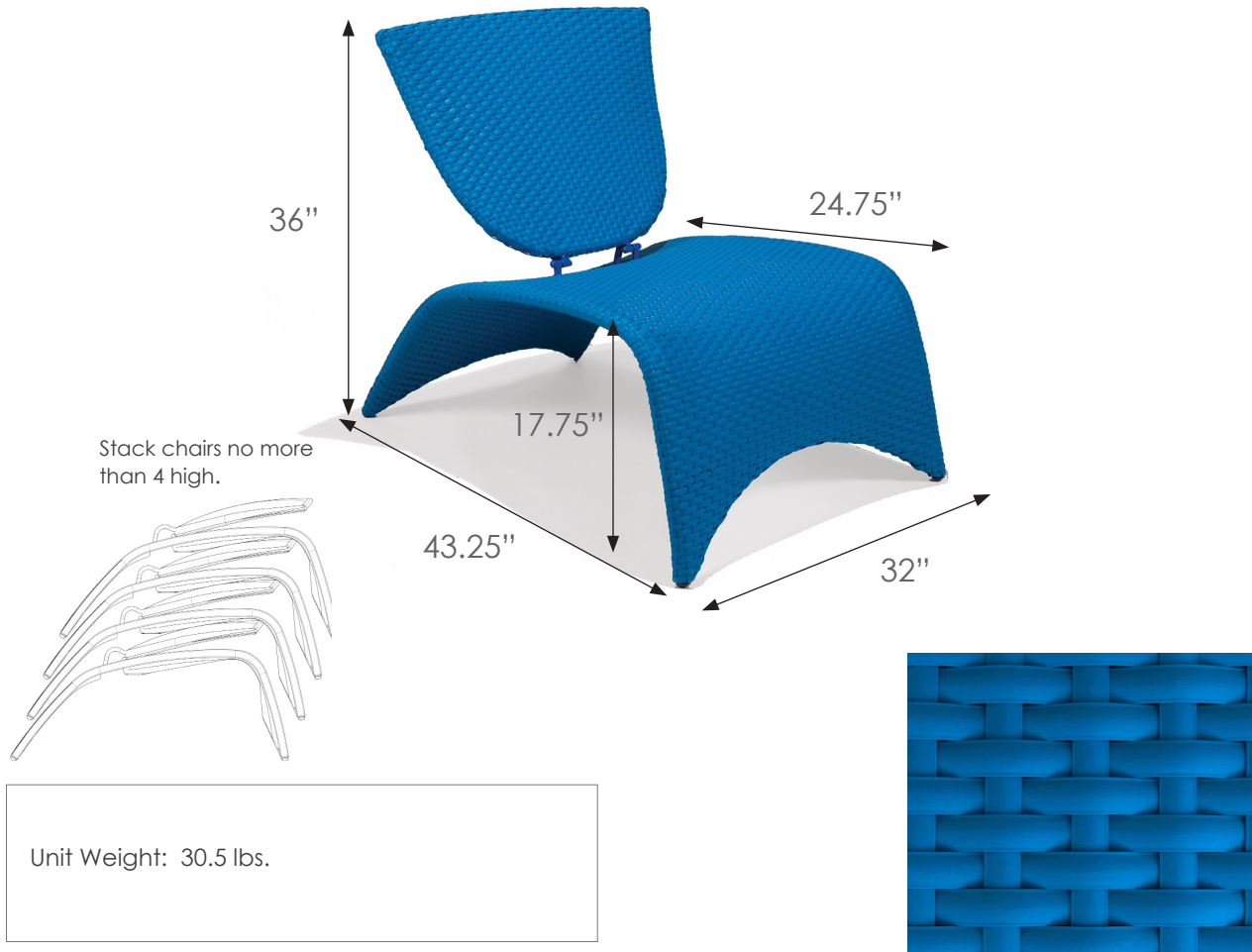


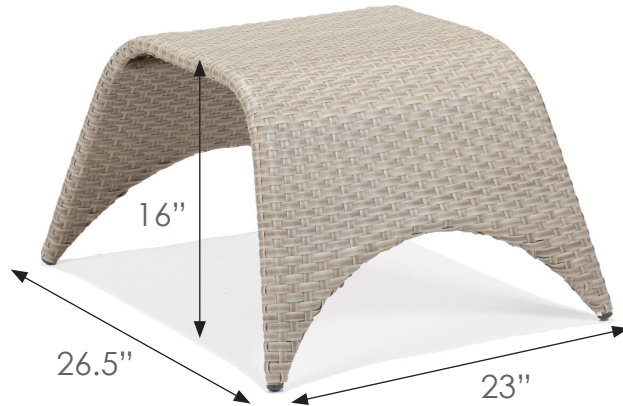
SUMMARY SPECIFICATIONS ZUMA
MODEL **M87002BLU** LOUNGE CHAIR (BLUE WEAVE COLOR)

FRAMES: Frames are made of powder coated, commercial grade aluminum. Frames are covered in a proprietary polyethylene weave material with UV stabilizers. The coloration is throughout the weave and has a very slight ribbed texture to the surface. The weave is hand woven over painted tubular aluminum frame. Rubberized Foot Glides help hold furniture stationary. Back is two positions- open and closed (folded down).

Texacraft® reserves the right to make minor changes or modifications and to discontinue finish color, strap color, fabrics, or styles without notice. Measurements given are approximate. Information provided is as accurate as possible.

SUMMARY SPECIFICATIONS ZUMA
MODEL **M87006DWD** SIDE TABLE (DRIFTWOOD WEAVE COLOR)

Also Available in:
M87009RDW Rosewood Weave
M77009SAP Sapphire Weave
M87009LIM Lime Weave
M87009BLU Blue Weave
M87009RED Red Weave
M87009YEL Yellow Weave
M87009ORG Orange Weave
M87009SLT Slate Weave



Unit Weight: 7.5 lbs.

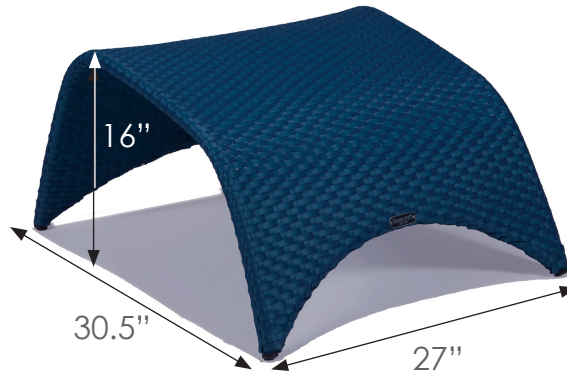


FRAMES: Frames are made of powder coated, commercial grade aluminum. Frames are covered in a proprietary polyethylene weave material with UV stabilizers. The coloration is throughout the weave and has a very slight ribbed texture to the surface. The weave is hand woven over painted tubular aluminum frame. Rubberized Foot Glides help hold furniture stationary. Back is two positions- open and closed (folded down).

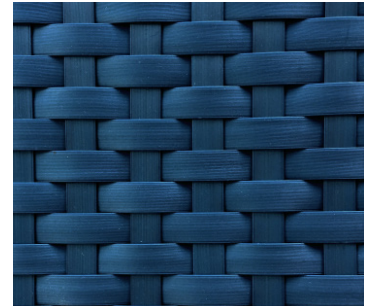
Texacraft® reserves the right to make minor changes or modifications and to discontinue finish color, strap color, fabrics, or styles without notice. Measurements given are approximate. Information provided is as accurate as possible.

SUMMARY SPECIFICATIONS ZUMA
MODEL **M87008SAP** OTTOMAN (SAPPHIRE WEAVE COLOR)

Also Available in:
M87008RDW Rosewood Weave
M77008DWD Driftwood Weave
M87008LIM Lime Weave
M87008BLU Blue Weave
M87008RED Red Weave
M87008YEL Yellow Weave
M87008ORG Orange Weave
M87008SLT Slate Weave



Unit Weight: 8.5 lbs.



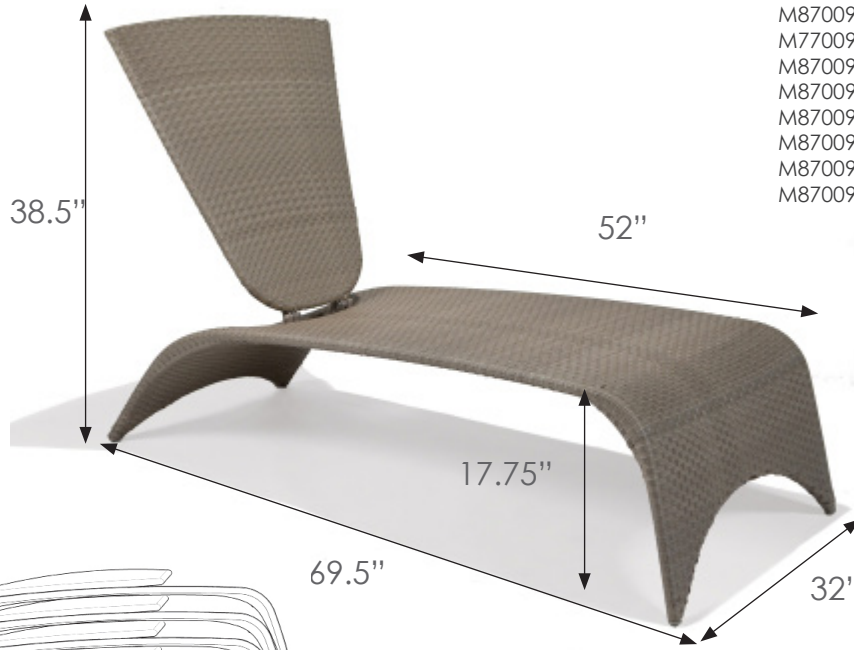
FRAMES: Frames are made of powder coated, commercial grade aluminum. Frames are covered in a proprietary polyethylene weave material with UV stabilizers. The coloration is throughout the weave and has a very slight ribbed texture to the surface. The weave is hand woven over painted tubular aluminum frame. Rubberized Foot Glides help hold furniture stationary. Back is two positions- open and closed (folded down).

STORAGE: The Zuma ottoma is designed to fit underneath the lounge chair when not in use.

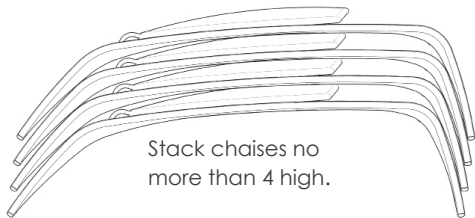
Texacraft® reserves the right to make minor changes or modifications and to discontinue finish color, strap color, fabrics, or styles without notice. Measurements given are approximate. Information provided is as accurate as possible.



SUMMARY SPECIFICATIONS ZUMA
MODEL **M87009DWD** CHAISE LOUNGE (DRIFTWOOD WEAVE COLOR)



Also Available in:
M87009RDW Rosewood Weave
M77009SAP Sapphire Weave
M87009LIM Lime Weave
M87009BLU Blue Weave
M87009RED Red Weave
M87009YEL Yellow Weave
M87009ORG Orange Weave
M87009SLT Slate Weave



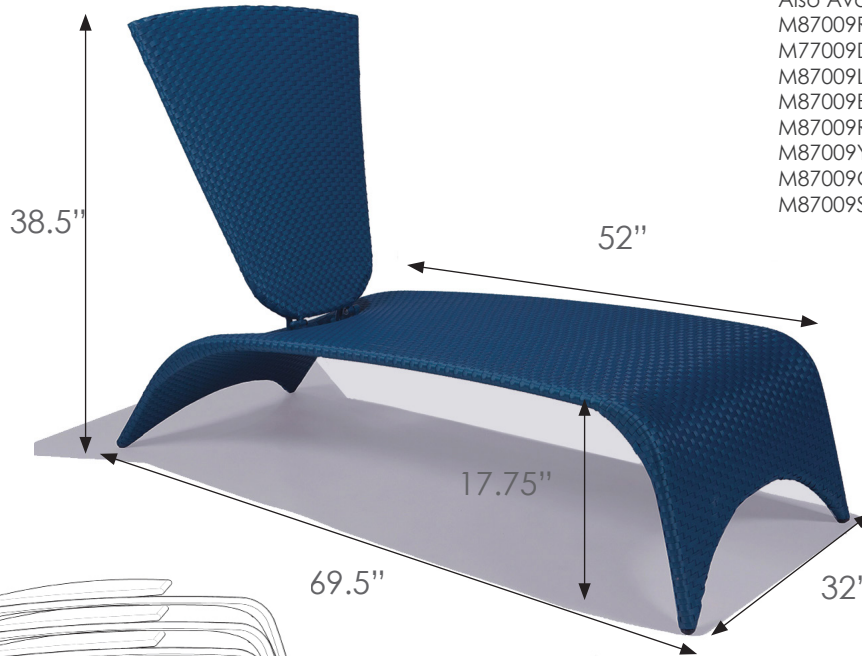
Unit Weight: 46 lbs.



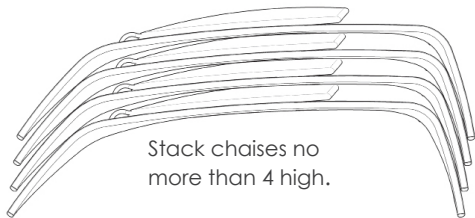
FRAMES: Frames are made of powder coated, commercial grade aluminum. Frames are covered in a proprietary polyethylene weave material with UV stabilizers. The coloration is throughout the weave and has a very slight ribbed texture to the surface. The weave is hand woven over painted tubular aluminum frame. Rubberized Foot Glides help hold furniture stationary. Back is two positions- open and closed (folded down).

Texacraft® reserves the right to make minor changes or modifications and to discontinue finish color, strap color, fabrics, or styles without notice. Measurements given are approximate. Information provided is as accurate as possible.

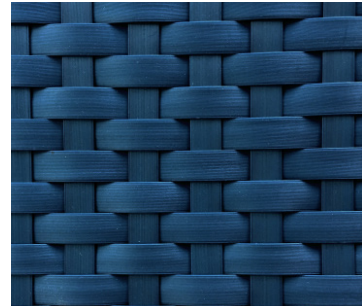
SUMMARY SPECIFICATIONS ZUMA
MODEL **M87009SAP** CHAISE LOUNGE (SAPPHIRE WEAVE COLOR)



Also Available in:
M87009RDW Rosewood Weave
M77009DWD Driftwood Weave
M87009LIM Lime Weave
M87009BLU Blue Weave
M87009RED Red Weave
M87009YEL Yellow Weave
M87009ORG Orange Weave
M87009SLT Slate Weave



Unit Weight: 46 lbs.



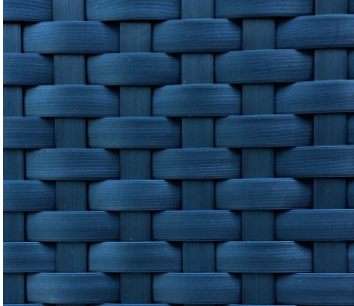
FRAMES: Frames are made of powder coated, commercial grade aluminum. Frames are covered in a proprietary polyethylene weave material with UV stabilizers. The coloration is throughout the weave and has a very slight ribbed texture to the surface. The weave is hand woven over painted tubular aluminum frame. Rubberized Foot Glides help hold furniture stationary. Back is two positions- open and closed (folded down).

Texacraft® reserves the right to make minor changes or modifications and to discontinue finish color, strap color, fabrics, or styles without notice. Measurements given are approximate. Information provided is as accurate as possible.

SUMMARY SPECIFICATIONS NEXUS
MODEL **M77041SAP** TOWEL RACK (SAPPHIRE WEAVE COLOR)



Unit Weight: 46.5 lbs.



FRAMES: Frames are made of powder coated, commercial grade aluminum. Frames are covered in a proprietary polyethylene weave material with UV stabilizers. The coloration is throughout the weave and has a very slight ribbed texture to the surface. The weave is hand woven over painted tubular aluminum frame. Rubberized Foot Glides help hold furniture stationary. Back is two positions- open and closed (folded down).

Texacraft® reserves the right to make minor changes or modifications and to discontinue finish color, strap color, fabrics, or styles without notice. Measurements given are approximate. Information provided is as accurate as possible.