



OX1112C ▼



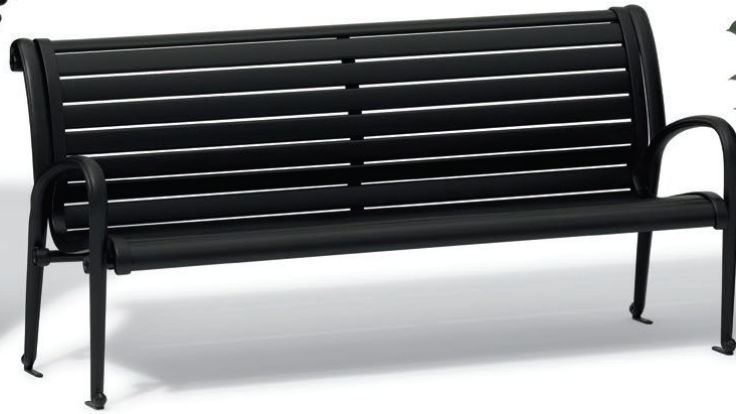
OXFORD

Designed by John Caldwell Design, the breathtaking curvature and vertical lines of the Oxford collection recall the majesty of a cascading wave. Even while seated on an Oxford bench, everything in the line makes one think it's in a constant flowing state. And, just like our Ashley collection, everything in our Oxford line is made entirely from aluminum, meaning it's completely protected from rust and corrosion.

OXFORD CONTINUED ▶



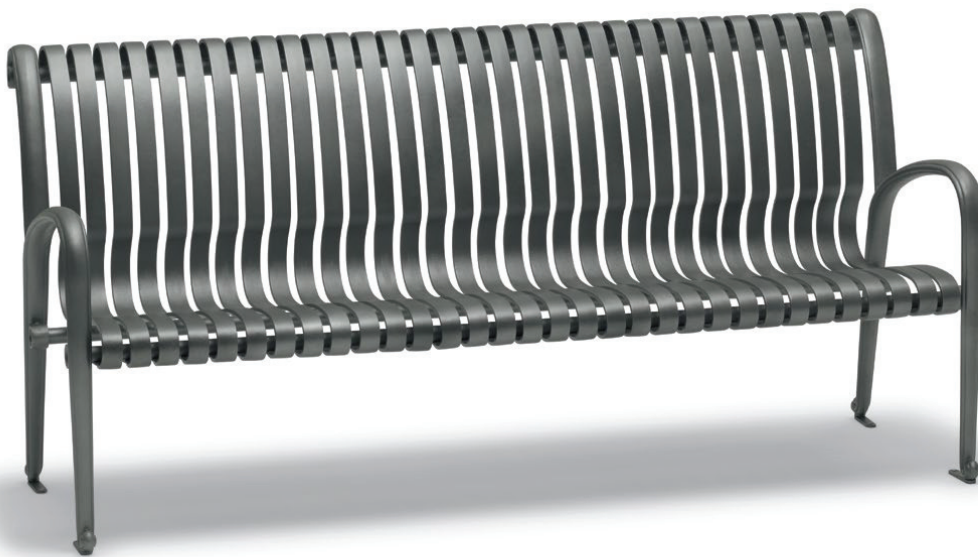
◀ T13B33P



OX1119C ▲






▲ P17533P



▲ OX1113C



| MODEL | DESCRIPTION  | FAUX-WOOD | WEIGHT | PRICE |
|---------|---|-----------------|---------|----------------------|
| OX1112C | 6' Bench with back, with arms - Faux-wood - Portable/Surface-mount | | 117 lb. | \$1305.00 |
| MODEL | DESCRIPTION  | SLAT | WEIGHT | PRICE |
| OX1113C | 6' Bench with back, with arms - Slat - Portable/Surface-mount | | 136 lb. | \$1424.00 |
| MODEL | DESCRIPTION  | HORIZONTAL SLAT | WEIGHT | PRICE |
| OX1119C | 6' Bench with back, with arms - Horizontal slat - Portable/Surface-mount | | 117 lb. | \$1305.00 |

Go to SiteFurnishings.Indoff.com for current pricing.

BUILD YOUR OWN OXFORD

CHOOSE STYLE AND FRAME

BENCHES

6' Bench with back

MOUNTING OPTIONS

Portable/Surface-mount

CHOOSE MATERIALS AND FINISHES

PATTERNS

Slat: Cast aluminum

Horizontal slat: Reinforced aluminum extrusion

Faux-wood: Reinforced aluminum extrusion

FRAMING

Aluminum casting

HARDWARE

Stainless steel

FINISHES

Tabletops/Seats: Powder-coated or Faux-wood

Frames: Powder-coated

Superior AAMA 2604-05 specified Powder coating.

This line can be coated in one color or you can complement the frame with the surface.

See finish options on page 163.

SiteFurnishings.Indoff.com

(844) 433-9610

Allen Peterson