



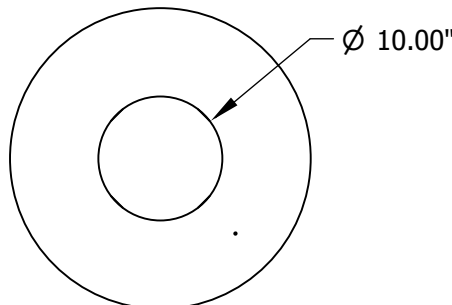
L1336M
ULTRA RECEPTACLE
32-gallon plastisol coated, slotted steel receptacle with liner and contour top

Replacement Parts

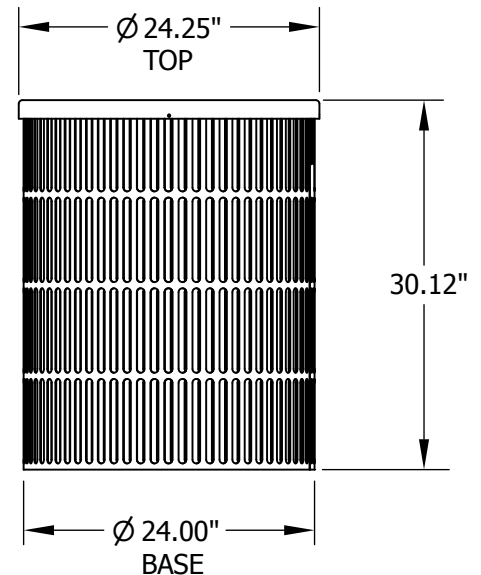
Black Plastic Liner **F1017**
Universal Contour Top **F3005**

Accessories

Traditional In ground Mount **F1094**
Traditional Surface Mount **F1098**
45° Roadside In ground Mount **F1407**
45° Roadside Surface Mount **F1406**
Corkscrew Anchor **A1020**



TOP VIEW



Material

The 32-gallon receptacle body is made of 12-gauge slotted steel with a .44" gap slotted pattern. The receptacle is protected by Fusion Advantage™, a plastisol coating with an average .125" thickness and a high-gloss powder coat. The contour top is made of powder coated spun steel.

Finish

Fusion Advantage is a heat fused plastisol coating that creates an impervious rustproof barrier and resists UV deterioration, mildew, staining and fading.

The finish has been tested to the requirements of ASTM E1354 and is determined to be in compliance with California Uniform Fire Code 1103.2.1.4.2.

Color

See website or sales representative for color choices.

Assembly

Attaching the contour top to the receptacle body requires some assembly. Purchase of mounting options may require additional assembly.

Maintenance

The product is virtually maintenance-free and requires only periodic cleaning with a sponge and a solution of mild detergent and water to remove surface dirt. Do not clean with solvent or petroleum based products.

Warranty

20-year limited structural warranty with 7-year finish warranty from the date of purchase. See full details on multi-year warranties for components at www.anovafurnishings.com/warranty.aspx.

Shipping Information

Unit Wt.	Unit Shipping Wt. UPS (1 units)	Unit Shipping Wt. Truck (2+ units)	Unit Ship Size w/Pallet	Max Units per Pallet	Pallet Wt. (48" x 48")	Total No. Pkgs	Shipping Class
79 lbs	100 lbs/unit	87 lbs lbs/unit	32 cu. ft.	8	50 lbs	1	100