

BH1894B — Beacon Hill Bamboo 4' Flat Bench**4' flat bench with bamboo and aluminum planks and cast iron armrests and legs****Material**

The 4' flat bench is composed of 1" x 3.5" (1" x 4" nominal dimensions) and 1" x 2" bamboo seat planks, aluminum accent planks, cast iron armrests and legs and steel under supports. The bench is 53.43" long and will support 200 lbs per linear foot.

The bench is designed to be portable for flexibility in placement or surface mounted using predrilled .5" diameter holes in feet to prevent movement. Mounting hardware is not included.

Mature exterior grade bamboo is selected from sustainably harvested sources and engineered into planks using low V.O.C. adhesives. Planks feature a Janka hardness rating of 1450 that is superior to teak. Bamboo has 20% more stability in climate and temperature changes than commonly used timber. Bamboo has a Class A fire rating—ASTM E 84 Surface Burning.

Finish

Fade-resistant, powder coated steel, aluminum and cast iron components feature a state-of-the-art primer proven to prevent rusting. Treated components exceed the industry standard by 34% in testing by independent sources.

Bamboo planks feature a UV-resistant stain.

Color

See website or sales representative for color choices.

Assembly

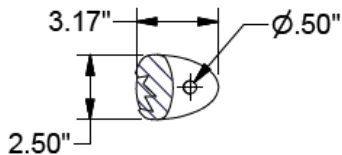
The bench ships fully assembled and ready for use. Assembly includes stainless steel hardware.

Maintenance

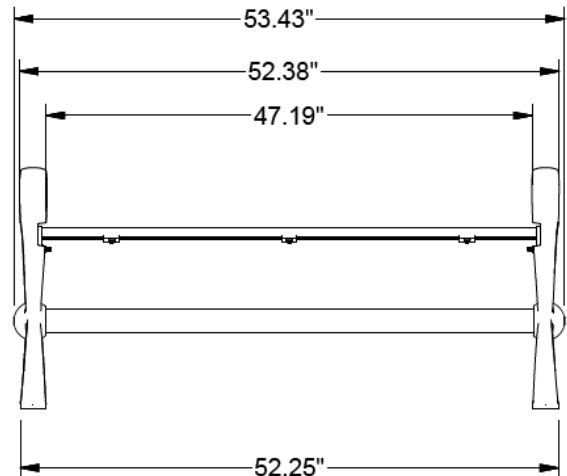
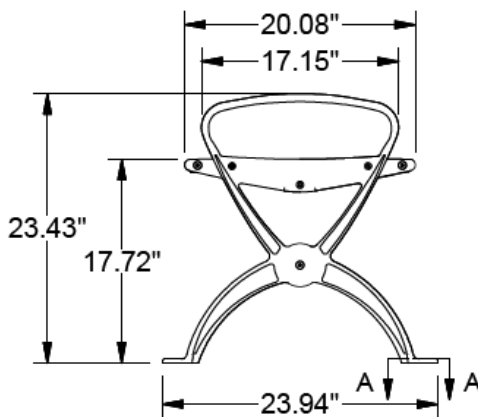
See annual maintenance program.

Warranty

10-year limited structural warranty on bamboo with annual maintenance program from the date of purchase.



SECTION A-A
4X FOOT MOUNT

**SHIPPING INFORMATION**

Unit Weight	Unit Shipping Wt. UPS	Unit Shipping Wt. Truck (1+ Units)	Unit Ship Size w/Pallet	Max Units Per Pallet	Pallet Size/Wt. (48" x 58")	Total No. Pkgs.	Shipping Class
129 lbs.	N/A	133 lbs./unit	62 cu. ft.	1	50 lbs.	1	250