

BH1880T — Beacon Hill Thermory® 6' Contour Bench

6' contour bench with Thermory and aluminum planks and cast iron armrests and legs

Material

The 6' contour bench is composed of 1" x 3.5" (1" x 4" nominal dimensions) Thermory seat and back planks, aluminum accent planks, cast iron armrests and legs and steel under supports. The armrests have individual right end and left end orientations. The bench is 77.43" long and will support 200 lbs. per linear foot.

The bench is designed to be portable for flexibility in placement or surface mounted using pre-drilled .50" diameter holes in feet to prevent movement. Mounting hardware is not included.

Low-maintenance Thermory is made from thermally-modified North American White Ash—a sustainably-harvested and renewable temperate hardwood. It is an environmentally-friendly hardwood and a great alternative to commonly used tropical rainforest hardwoods because of its dimensional stability and Class 1 durability (25+ years). Thermory has a lower carbon footprint than tropical hardwoods.

Finish

Fade-resistant, powder coated steel, aluminum and cast iron components feature a state-of-the-art primer proven to prevent rusting. Treated components exceed the industry standard by 34% in testing by independent sources.

Thermory is a lustrous chocolate brown color when new and will naturally age to uniform silver/gray over time. The color-changing process begins immediately and varies with the amount of UV-exposure.

Color

See website or sales representative for color choices.

Assembly

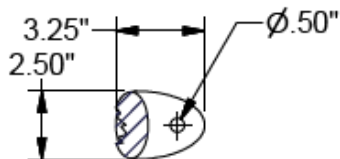
The bench ships fully assembled and ready for use. Assembly includes stainless steel hardware.

Maintenance

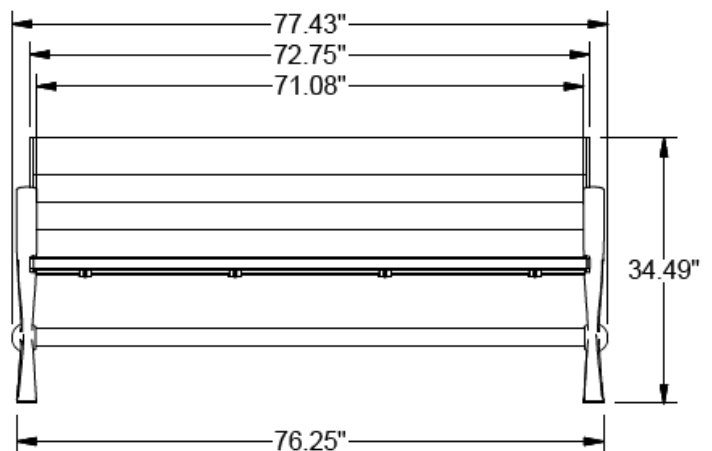
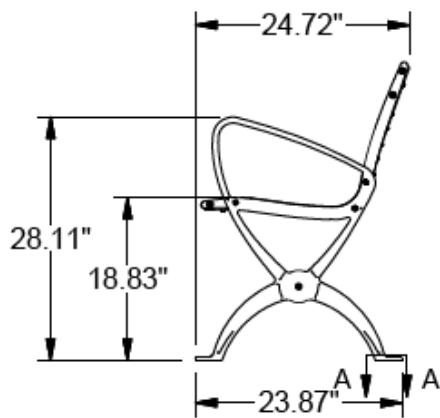
Clean with mild soap and water. Let dry thoroughly. To maintain original color, regularly apply standard deck oil, such as Cutek® Extreme Wood Protection Oil.

Warranty

10-year limited structural warranty from the date of purchase.



SECTION A-A
4X FOOT MOUNT

**SHIPPING INFORMATION**

Unit Weight	Unit Shipping Wt. UPS	Unit Shipping Wt. Truck (1+ Units)	Unit Ship Size w/Pallet	Max Units Per Pallet	Pallet Size/Wt. (32" x 98")	Total No. Pkgs.	Shipping Class
188 lbs.	N/A	200 lbs./unit	74 cu. ft.	1	100 lbs.	1	150