

**BH1835T — Beacon Hill Thermory® Receptacle with Open Top****35-gallon receptacle with Thermory planks, open top, plastic liner and rubber feet****Material**

The receptacle is 31.51" tall and is composed of nominal 1" x 4" Thermory planks with choice of horizontal or vertical plank placement and an extruded aluminum frame. Flexible modular design allows for customization; call for information.

The top is made from 11-gauge steel with an 11.13 square waste opening and lifts off for easy waste disposal.

The receptacle is designed to be portable for flexibility in placement or surface mounted using .50" pre-drilled holes in the base to prevent movement. The rubber feet are adjustable to assist in leveling the receptacle. The reusable plastic liner is made of high-density polyethylene. The mounting hardware is not included.

Low-maintenance Thermory is made from thermally-modified North American White Ash—a sustainably-harvested and renewable temperate hardwood. It is an environmentally-friendly hardwood and a great alternative to commonly used tropical rainforest hardwoods because of its dimensional stability and Class 1 durability (25+ years). Thermory has a lower carbon footprint than tropical hardwoods.

**Finish**

Fade-resistant, powder coated steel and aluminum components feature a state-of-the-art primer proven to prevent rusting. Treated components exceed the industry standard by 34% in testing by independent sources.

Thermory is a lustrous chocolate brown color when new and will naturally age to uniform silver/gray over time. The color-changing process begins immediately and varies with the amount of UV-exposure.

**Color**

See website or sales representative for color choices.

**Assembly**

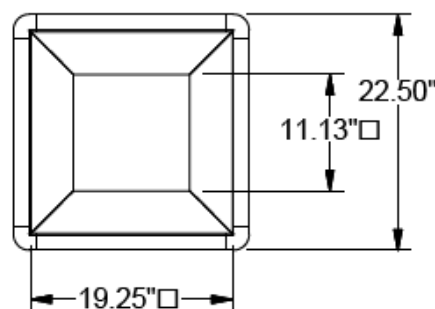
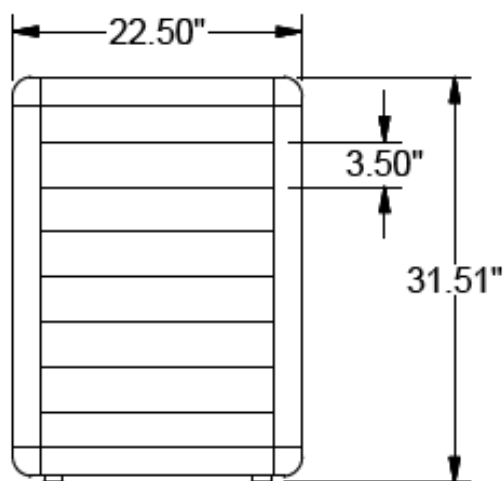
The receptacle ships fully assembled and ready for use.

**Maintenance**

Clean with mild soap and water. Let dry thoroughly. To maintain original color, regularly apply standard deck oil, such as Cutek® Extreme Wood Protection Oil.

**Warranty**

10-year limited structural warranty from the date of purchase.

**SHIPPING INFORMATION**

Unit Weight	Unit Shipping Wt. UPS	Unit Shipping Wt. Truck (1+ Units)	Unit Ship Size w/Pallet	Max Units Per Pallet	Pallet Size/Wt. (32" x 48")	Total No. Pkgs.	Shipping Class
101 lbs.	N/A	105 lbs./unit	28 cu. ft.	2	50 lbs.	1	125