

**BH1830SB— Beacon Hill Bamboo ADA Table with 3 Swivel Seats****42" square ADA table with bamboo planks and three swivel seats, surface mount****Material**

The ADA table has a 41.52" square table top, features three contour swivel seats and meets federal ADA requirements. The table top frame is 10-gauge steel and the table top and contour seats are composed of 1" x 3.5" (1" x 4" nominal dimensions) bamboo planks. The table top features a 1.64" diameter umbrella hole in the center and is designed to support 100 lbs. per square foot.

The seats are composed of aluminum and steel plates and are designed to support 200 lbs. per linear foot. The seats swivel 90 degrees to each side for easy entry and exit.

The table frame and legs are made of 2.38" O.D. steel tubing and feature a built-in umbrella holder. The table legs have feet with predrilled .4" diameter holes for surface mounting to prevent movement. Table **must be surface mounted** for stability and to comply with warranty and federal regulations; mounting hardware is not included.

Mature exterior grade bamboo is selected from sustainably harvested sources and engineered into planks using low V.O.C. adhesives. Planks feature a Janka hardness rating of 1450 that is superior to teak. Bamboo has 20% more stability in climate and temperature changes than commonly used timber. Bamboo has a Class A fire rating—ASTM E 84 Surface Burning.

**Finish**

Fade-resistant, powder coated steel and aluminum components feature a state-of-the-art primer proven to prevent rusting. Treated components exceed the industry standard by 34% in testing by independent sources.

Bamboo planks feature a UV-resistant stain.

**Color**

See website or sales representative for color choices.

**Assembly**

The table requires some assembly. The table top and seats ship pre-assembled. Stainless steel assembly hardware is included.

**Maintenance**

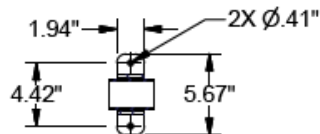
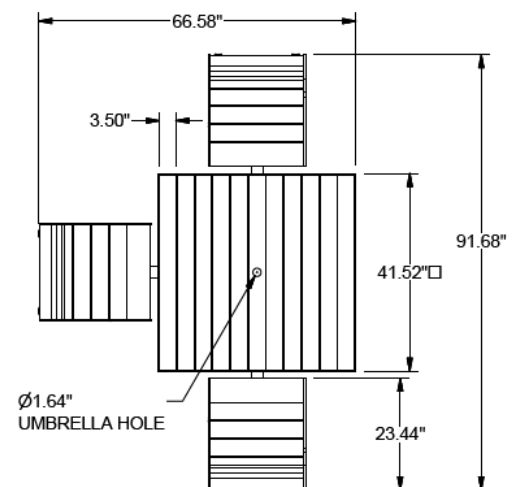
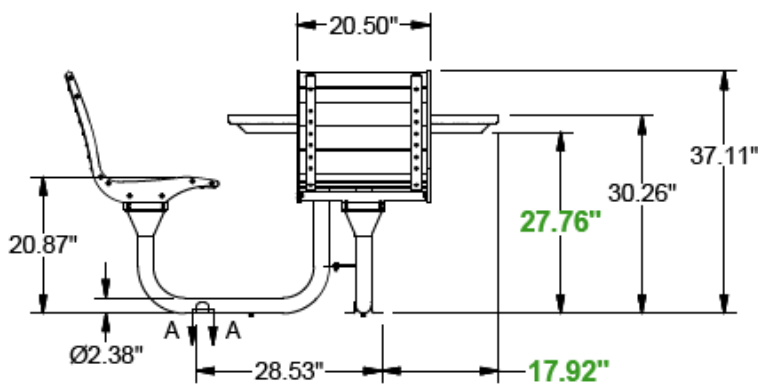
See annual maintenance program.

**Warranty**

10-year limited structural warranty on bamboo with annual maintenance program from the date of purchase.

**Accessories**

- 9' Standard Fabric Color Umbrella 9LPU-CSC
- 9' Premium Fabric Color Umbrella 9LPU-CPC
- Umbrella Brace UBRACE

**FOOT MOUNT****SHIPPING INFORMATION**

Unit Weight	Unit Shipping Wt. UPS	Unit Shipping Wt. Truck (1+ Units)	Unit Ship Size w/Pallet	Max Units Per Pallet	Pallet Size/Wt. (48" x 58")	Total No. Pkgs.	Shipping Class
303 lbs.	N/A	339 lbs./unit	50 cu. ft.	1	50 lbs.	5	100