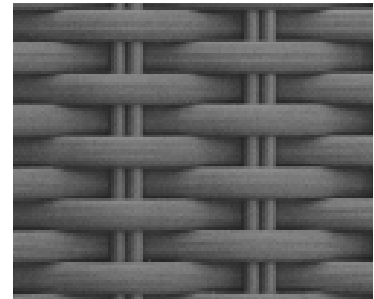


SUMMARY SPECIFICATIONS LANTANA
MODEL **M75001** DINING CHAIR STACKABLE



Unit Weight: 20 lbs.



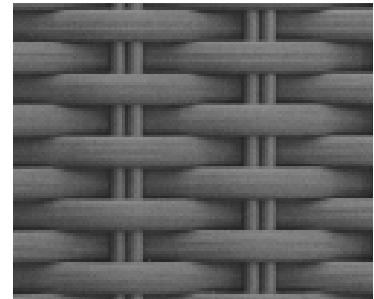
FRAMES: Frame structure is made from commercial grade, non-rusting aluminum. Modular pieces can be joined together in limitless configurations and held together with nylon clips that keep the pieces stationary.

WEAVE: The "Slate" weave is a polyethylene material with UV inhibitors with no acrylic additives. It has a slight ribbed texture with the dark gray coloration infused throughout the weave core. Each piece is hand-woven usually by one individual- a labor intensive process.

Texacraft® reserves the right to make minor changes or modifications and to discontinue finish color, strap color, fabrics, or styles without notice. Measurements given are approximate. Information provided is as accurate as possible.

SUMMARY SPECIFICATIONS LANTANA
MODEL **M75014B** BALCONY STOOL

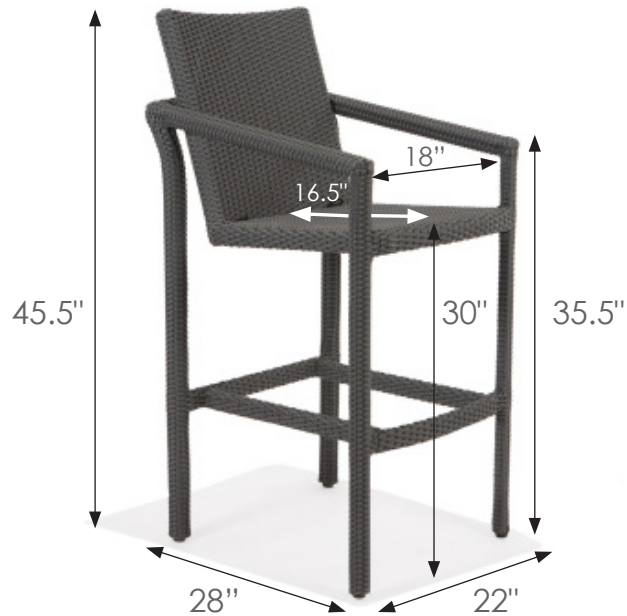
Unit Weight: 24 lbs.



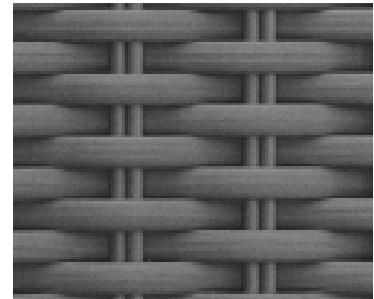
FRAMES: Frame structure is made from commercial grade, non-rusting aluminum. Modular pieces can be joined together in limitless configurations and held together with nylon clips that keep the pieces stationary.

WEAVE: The "Slate" weave is a polyethylene material with UV inhibitors with no acrylic additives. It has a slight ribbed texture with the dark gray coloration infused throughout the weave core. Each piece is hand-woven usually by one individual- a labor intensive process.

Texacraft® reserves the right to make minor changes or modifications and to discontinue finish color, strap color, fabrics, or styles without notice. Measurements given are approximate. Information provided is as accurate as possible.

SUMMARY SPECIFICATIONS LANTANA
MODEL **M75014** BAR STOOL

Unit Weight: 25 lbs.

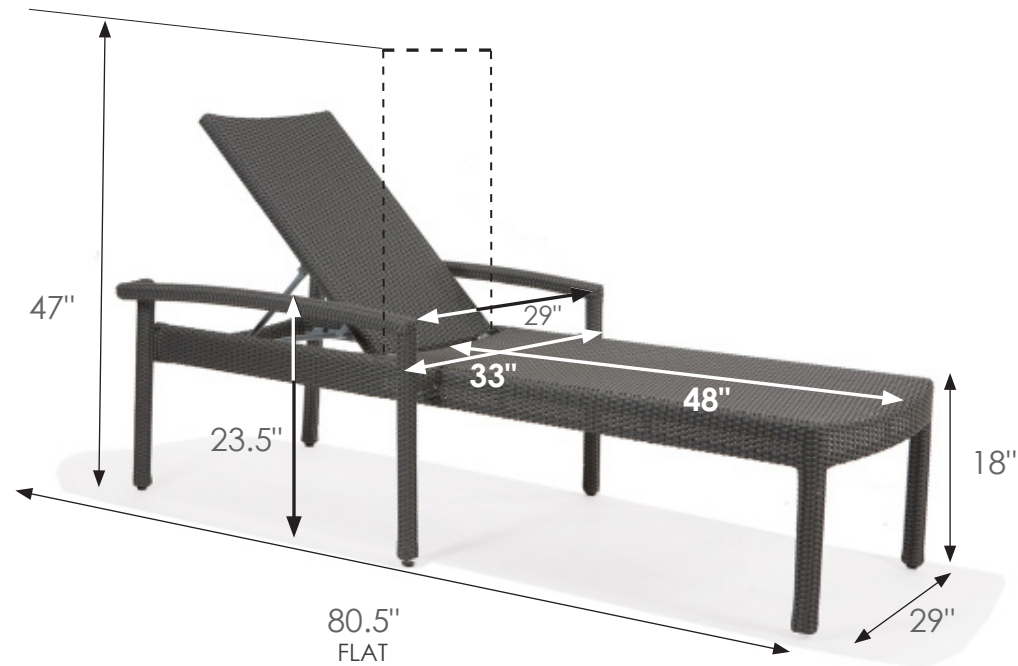


FRAMES: Frame structure is made from commercial grade, non-rusting aluminum. Modular pieces can be joined together in limitless configurations and held together with nylon clips that keep the pieces stationary.

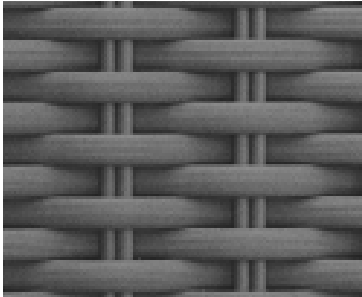
WEAVE: The "Slate" weave is a polyethylene material with UV inhibitors with no acrylic additives. It has a slight ribbed texture with the dark gray coloration infused throughout the weave core. Each piece is hand-woven usually by one individual- a labor intensive process.

Texacraft® reserves the right to make minor changes or modifications and to discontinue finish color, strap color, fabrics, or styles without notice. Measurements given are approximate. Information provided is as accurate as possible.

SUMMARY SPECIFICATIONS LANTANA
MODEL **M75009** CHAISE LOUNGE



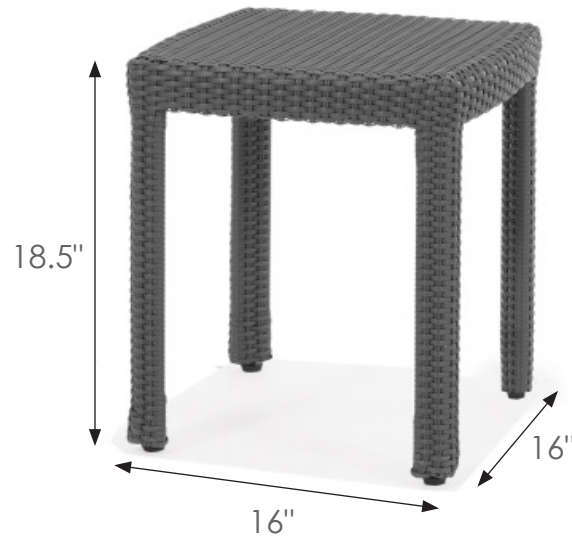
Unit Weight: 50 lbs.



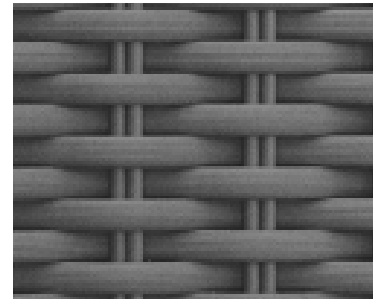
FRAMES: Frame structure is made from commercial grade, non-rusting aluminum. Modular pieces can be joined together in limitless configurations and held together with nylon clips that keep the pieces stationary.

WEAVE: The "Slate" weave is a polyethylene material with UV inhibitors with no acrylic additives. It has a slight ribbed texture with the dark gray coloration infused throughout the weave core. Each piece is hand-woven usually by one individual- a labor intensive process.

Texacraft® reserves the right to make minor changes or modifications and to discontinue finish color, strap color, fabrics, or styles without notice. Measurements given are approximate. Information provided is as accurate as possible.

SUMMARY SPECIFICATIONS LANTANA
MODEL **M75016SQ** CHAISE TABLE

Unit Weight: 7 lbs.

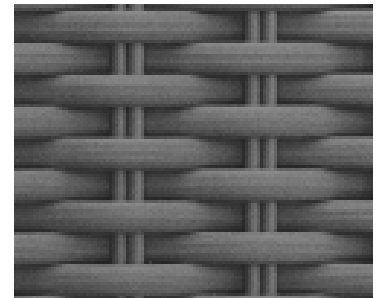
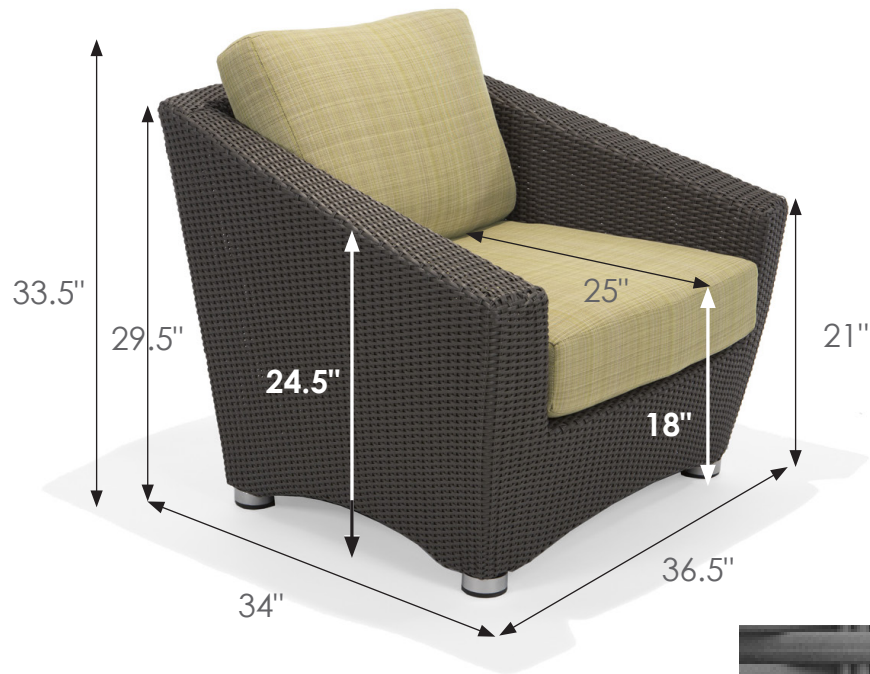


FRAMES: Frame structure is made from commercial grade, non-rusting aluminum. Modular pieces can be joined together in limitless configurations and held together with nylon clips that keep the pieces stationary.

WEAVE: The "Slate" weave is a polyethylene material with UV inhibitors with no acrylic additives. It has a slight ribbed texture with the dark gray coloration infused throughout the weave core. Each piece is hand-woven usually by one individual- a labor intensive process.

Texacraft® reserves the right to make minor changes or modifications and to discontinue finish color, strap color, fabrics, or styles without notice. Measurements given are approximate. Information provided is as accurate as possible.

SUMMARY SPECIFICATIONS LANTANA
MODEL **M75004** LOUNGE CHAIR



Unit Weight: 33 lbs.

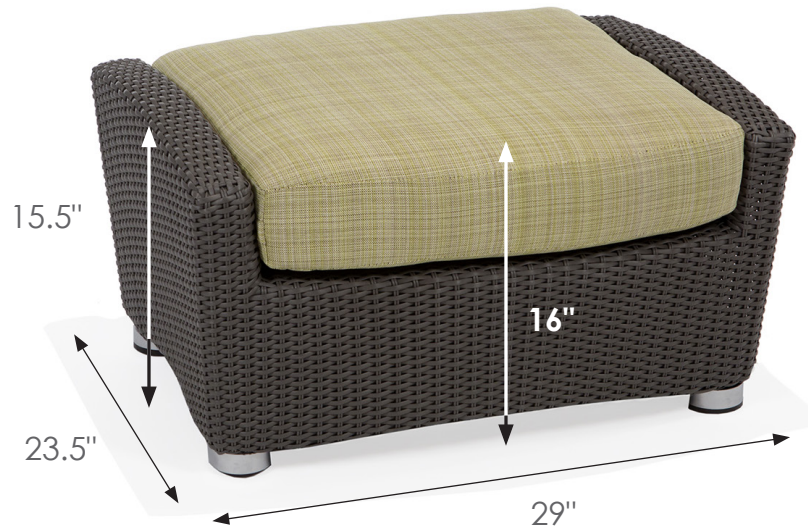
FRAMES: Frame structure is made from commercial grade, non-rusting aluminum. Modular pieces can be joined together in limitless configurations and held together with nylon clips that keep the pieces stationary.

WEAVE: The "Slate" weave is a polyethylene material with UV inhibitors with no acrylic additives. It has a slight ribbed texture with the dark gray coloration infused throughout the weave core. Each piece is hand-woven usually by one individual- a labor intensive process.

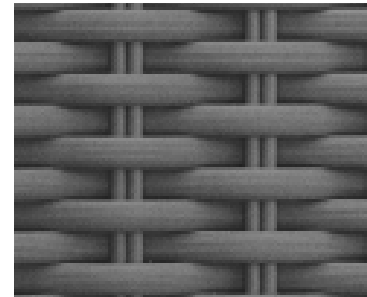
FABRIC: Our acrylic fabrics are created by leading outdoor fabric manufacturers and are UV tested for exterior use. Woven vinyl fabrics (used primarily as sling material) are made from weather weave, an open weave, vinyl-coated, polyester fiber fabric. Ultraviolet stabilizers have been added to inhibit fading, deterioration and mildew.

Texacraft® reserves the right to make minor changes or modifications and to discontinue finish color, strap color, fabrics, or styles without notice. Measurements given are approximate. Information provided is as accurate as possible.

SUMMARY SPECIFICATIONS LANTANA
MODEL **M75008** OTTOMAN



Unit Weight: 16 lbs.



FRAMES: Frame structure is made from commercial grade, non-rusting aluminum. Modular pieces can be joined together in limitless configurations and held together with nylon clips that keep the pieces stationary.

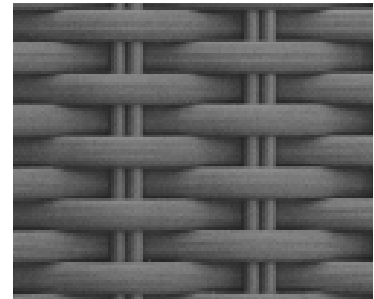
WEAVE: The "Slate" weave is a polyethylene material with UV inhibitors with no acrylic additives. It has a slight ribbed texture with the dark gray coloration infused throughout the weave core. Each piece is hand-woven usually by one individual- a labor intensive process.

FABRIC: Our acrylic fabrics are created by leading outdoor fabric manufacturers and are UV tested for exterior use. Woven vinyl fabrics (used primarily as sling material) are made from weather weave, an open weave, vinyl-coated, polyester fiber fabric. Ultraviolet stabilizers have been added to inhibit fading, deterioration and mildew.

Texacraft® reserves the right to make minor changes or modifications and to discontinue finish color, strap color, fabrics, or styles without notice. Measurements given are approximate. Information provided is as accurate as possible.

SUMMARY SPECIFICATIONS LANTANA
MODEL **M75022** LOVE SEAT

Unit Weight: 66 lbs.

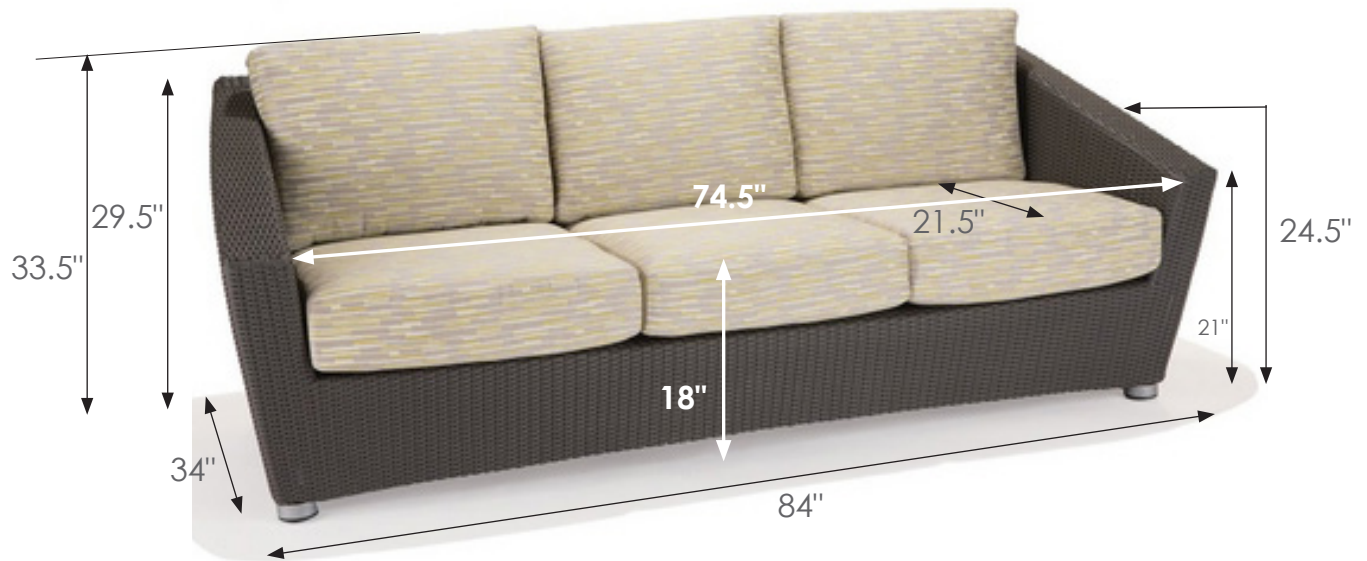


FRAMES: Frame structure is made from commercial grade, non-rusting aluminum. Modular pieces can be joined together in limitless configurations and held together with nylon clips that keep the pieces stationary.

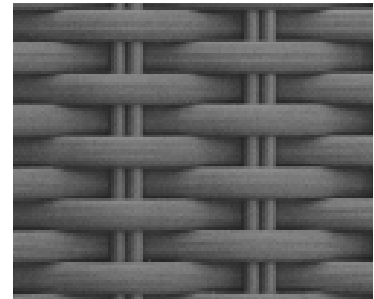
WEAVE: The "Slate" weave is a polyethylene material with UV inhibitors with no acrylic additives. It has a slight ribbed texture with the dark gray coloration infused throughout the weave core. Each piece is hand-woven usually by one individual- a labor intensive process.

FABRIC: Our acrylic fabrics are created by leading outdoor fabric manufacturers and are UV tested for exterior use. Woven vinyl fabrics (used primarily as sling material) are made from weather weave, an open weave, vinyl-coated, polyester fiber fabric. Ultraviolet stabilizers have been added to inhibit fading, deterioration and mildew.

Texacraft® reserves the right to make minor changes or modifications and to discontinue finish color, strap color, fabrics, or styles without notice. Measurements given are approximate. Information provided is as accurate as possible.

SUMMARY SPECIFICATIONS LANTANA
MODEL **M75003** SOFA

Unit Weight: 70 lbs.



FRAMES: Frame structure is made from commercial grade, non-rusting aluminum. Modular pieces can be joined together in limitless configurations and held together with nylon clips that keep the pieces stationary.

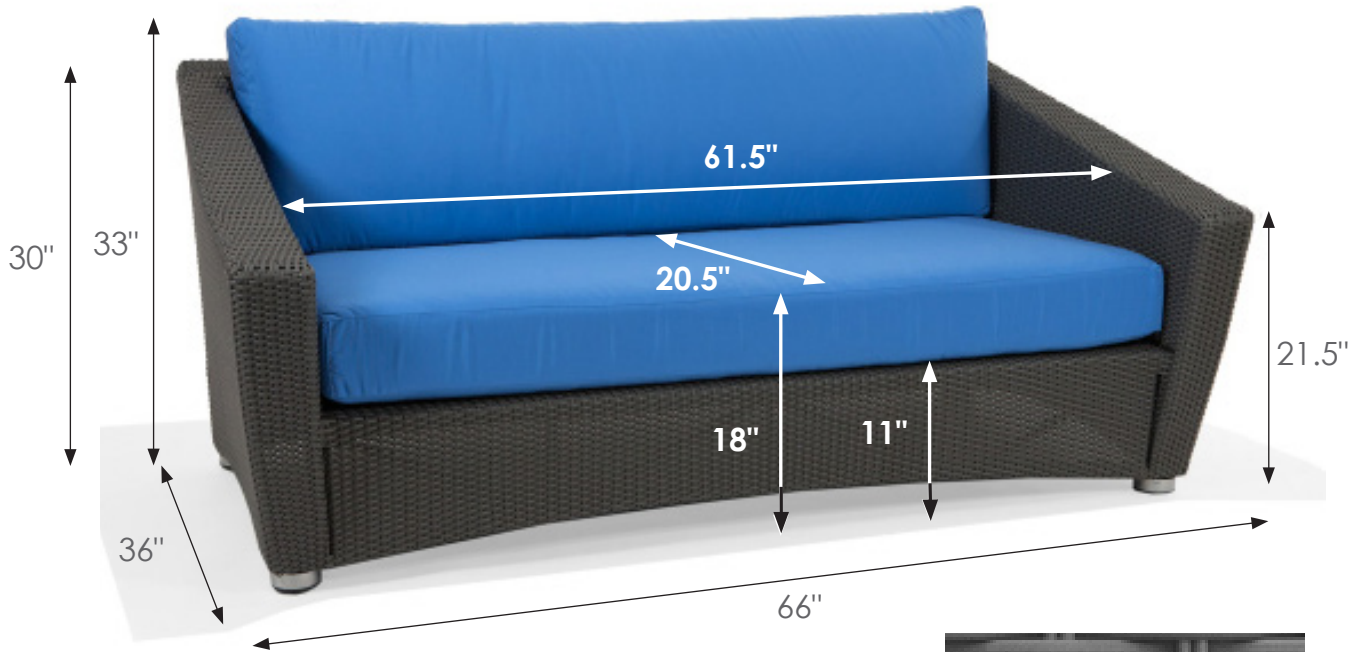
WEAVE: The "Slate" weave is a polyethylene material with UV inhibitors with no acrylic additives. It has a slight ribbed texture with the dark gray coloration infused throughout the weave core. Each piece is hand-woven usually by one individual- a labor intensive process.

FABRIC: Our acrylic fabrics are created by leading outdoor fabric manufacturers and are UV tested for exterior use. Woven vinyl fabrics (used primarily as sling material) are made from weather weave, an open weave, vinyl-coated, polyester fiber fabric. Ultraviolet stabilizers have been added to inhibit fading, deterioration and mildew.

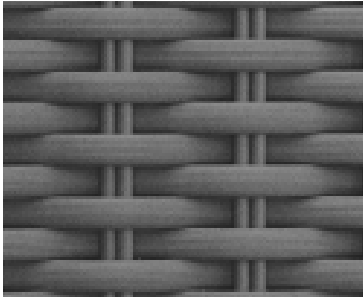
Texacraft® reserves the right to make minor changes or modifications and to discontinue finish color, strap color, fabrics, or styles without notice. Measurements given are approximate. Information provided is as accurate as possible.



SUMMARY SPECIFICATIONS LANTANA
MODEL **M75062** GRANDE LOUNGER



Unit Weight: 61 lbs.

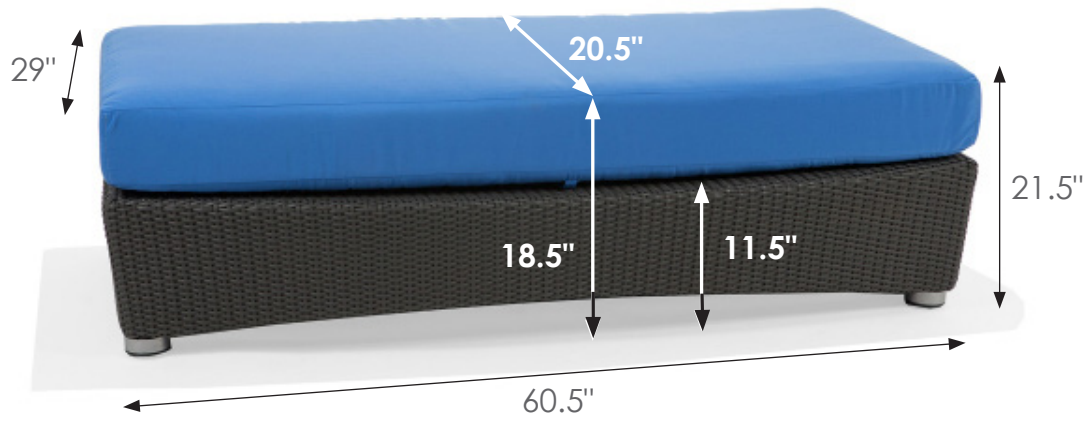


FRAMES: Frame structure is made from commercial grade, non-rusting aluminum. Modular pieces can be joined together in limitless configurations and held together with nylon clips that keep the pieces stationary.

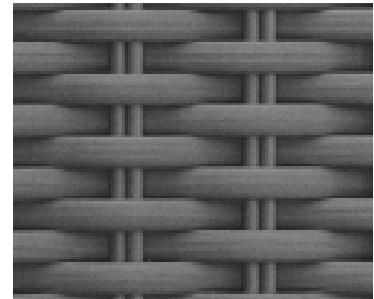
WEAVE: The "Slate" weave is a polyethylene material with UV inhibitors with no acrylic additives. It has a slight ribbed texture with the dark gray coloration infused throughout the weave core. Each piece is hand-woven usually by one individual- a labor intensive process.

FABRIC: Our acrylic fabrics are created by leading outdoor fabric manufacturers and are UV tested for exterior use. Woven vinyl fabrics (used primarily as sling material) are made from weather weave, an open weave, vinyl-coated, polyester fiber fabric. Ultraviolet stabilizers have been added to inhibit fading, deterioration and mildew.

Texcraft® reserves the right to make minor changes or modifications and to discontinue finish color, strap color, fabrics, or styles without notice. Measurements given are approximate. Information provided is as accurate as possible.

SUMMARY SPECIFICATIONS LANTANA
MODEL **M75068** GRANDE OTTOMAN

Unit Weight: 31 lbs.



FRAMES: Frame structure is made from commercial grade, non-rusting aluminum. Modular pieces can be joined together in limitless configurations and held together with nylon clips that keep the pieces stationary.

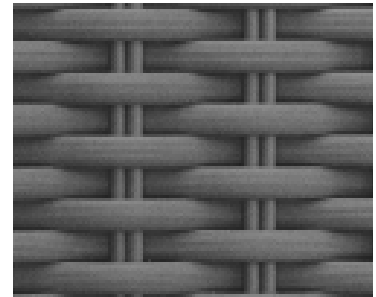
WEAVE: The "Slate" weave is a polyethylene material with UV inhibitors with no acrylic additives. It has a slight ribbed texture with the dark gray coloration infused throughout the weave core. Each piece is hand-woven usually by one individual- a labor intensive process.

FABRIC: Our acrylic fabrics are created by leading outdoor fabric manufacturers and are UV tested for exterior use. Woven vinyl fabrics (used primarily as sling material) are made from weather weave, an open weave, vinyl-coated, polyester fiber fabric. Ultraviolet stabilizers have been added to inhibit fading, deterioration and mildew.

Texacraft® reserves the right to make minor changes or modifications and to discontinue finish color, strap color, fabrics, or styles without notice. Measurements given are approximate. Information provided is as accurate as possible.

SUMMARY SPECIFICATIONS LANTANA
MODEL **M75002** ARMLESS CHAIR

Unit Weight: 29 lbs.



FRAMES: Frame structure is made from commercial grade, non-rusting aluminum. Modular pieces can be joined together in limitless configurations and held together with nylon clips that keep the pieces stationary.

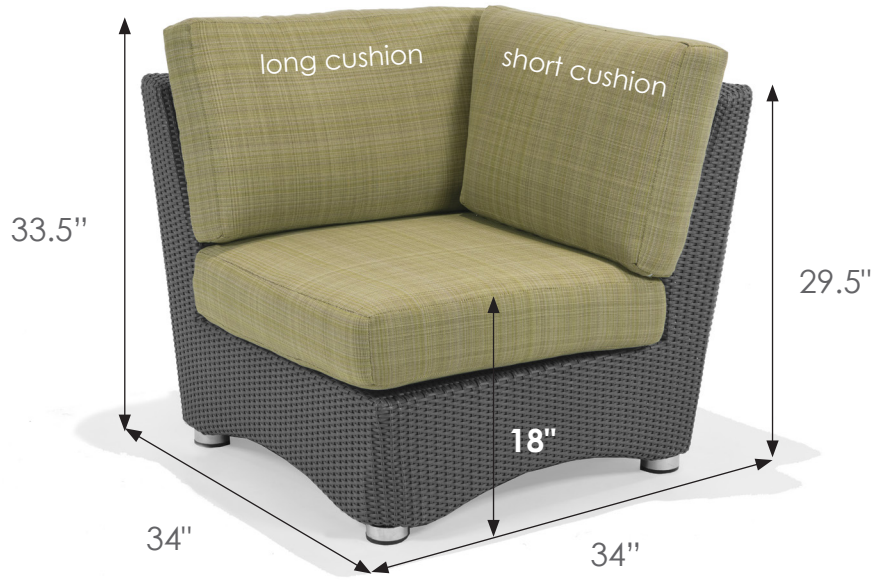
WEAVE: The "Slate" weave is a polyethylene material with UV inhibitors with no acrylic additives. It has a slight ribbed texture with the dark gray coloration infused throughout the weave core. Each piece is hand-woven usually by one individual- a labor intensive process.

FABRIC: Our acrylic fabrics are created by leading outdoor fabric manufacturers and are UV tested for exterior use. Woven vinyl fabrics (used primarily as sling material) are made from weather weave, an open weave, vinyl-coated, polyester fiber fabric. Ultraviolet stabilizers have been added to inhibit fading, deterioration and mildew.

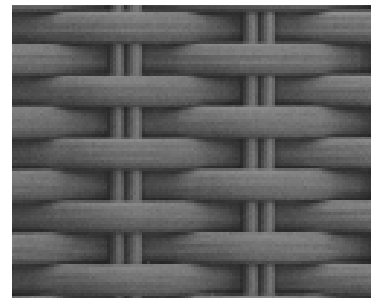
Texacraft® reserves the right to make minor changes or modifications and to discontinue finish color, strap color, fabrics, or styles without notice. Measurements given are approximate. Information provided is as accurate as possible.



SUMMARY SPECIFICATIONS LANTANA
MODEL **M75032** CORNER CHAIR - SQUARE



Unit Weight: 35 lbs.



FRAMES: Frame structure is made from commercial grade, non-rusting aluminum. Modular pieces can be joined together in limitless configurations and held together with nylon clips that keep the pieces stationary.

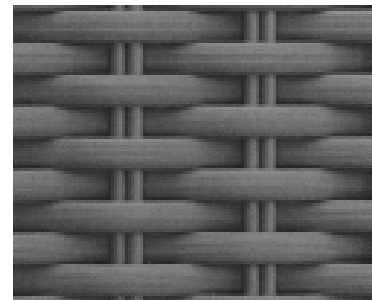
WEAVE: The "Slate" weave is a polyethylene material with UV inhibitors with no acrylic additives. It has a slight ribbed texture with the dark gray coloration infused throughout the weave core. Each piece is hand-woven usually by one individual- a labor intensive process.

FABRIC: Our acrylic fabrics are created by leading outdoor fabric manufacturers and are UV tested for exterior use. Woven vinyl fabrics (used primarily as sling material) are made from weather weave, an open weave, vinyl-coated, polyester fiber fabric. Ultraviolet stabilizers have been added to inhibit fading, deterioration and mildew.

Texacraft® reserves the right to make minor changes or modifications and to discontinue finish color, strap color, fabrics, or styles without notice. Measurements given are approximate. Information provided is as accurate as possible.

SUMMARY SPECIFICATIONS LANTANA
MODEL **M75035R** ARM CHAIR - RIGHT

Unit Weight: 33 lbs.



FRAMES: Frame structure is made from commercial grade, non-rusting aluminum. Modular pieces can be joined together in limitless configurations and held together with nylon clips that keep the pieces stationary.

WEAVE: The "Slate" weave is a polyethylene material with UV inhibitors with no acrylic additives. It has a slight ribbed texture with the dark gray coloration infused throughout the weave core. Each piece is hand-woven usually by one individual- a labor intensive process.

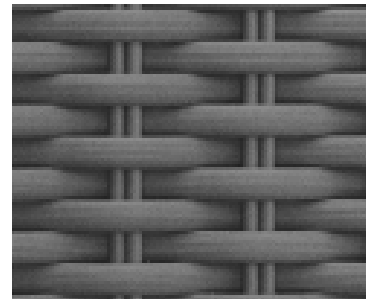
FABRIC: Our acrylic fabrics are created by leading outdoor fabric manufacturers and are UV tested for exterior use. Woven vinyl fabrics (used primarily as sling material) are made from weather weave, an open weave, vinyl-coated, polyester fiber fabric. Ultraviolet stabilizers have been added to inhibit fading, deterioration and mildew.

Texacraft®/Winston® Contract reserves the right to make minor changes or modifications and to discontinue finish color, strap color, fabrics, or styles without notice. Measurements given are approximate. Information provided is as accurate as possible.

SUMMARY SPECIFICATIONS LANTANA
MODEL **M75035L** ARM CHAIR - LEFT



Unit Weight: 33 lbs.



FRAMES: Frame structure is made from commercial grade, non-rusting aluminum. Modular pieces can be joined together in limitless configurations and held together with nylon clips that keep the pieces stationary.

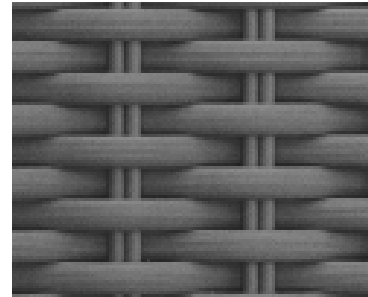
WEAVE: The "Slate" weave is a polyethylene material with UV inhibitors with no acrylic additives. It has a slight ribbed texture with the dark gray coloration infused throughout the weave core. Each piece is hand-woven usually by one individual- a labor intensive process.

FABRIC: Our acrylic fabrics are created by leading outdoor fabric manufacturers and are UV tested for exterior use. Woven vinyl fabrics (used primarily as sling material) are made from weather weave, an open weave, vinyl-coated, polyester fiber fabric. Ultraviolet stabilizers have been added to inhibit fading, deterioration and mildew.

Texacraft® reserves the right to make minor changes or modifications and to discontinue finish color, strap color, fabrics, or styles without notice. Measurements given are approximate. Information provided is as accurate as possible.

SUMMARY SPECIFICATIONS LANTANA
MODEL **M75050** CONSOLE TABLE

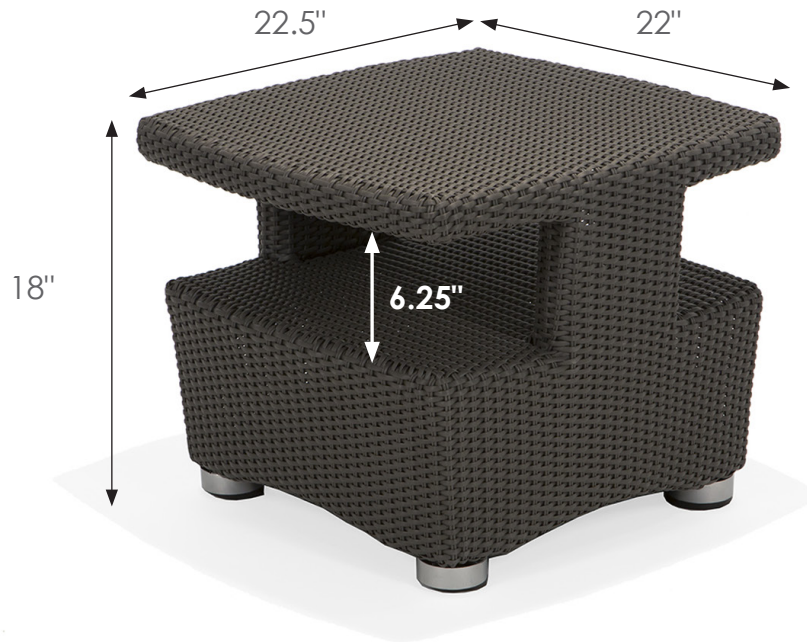
Unit Weight: 34 lbs.



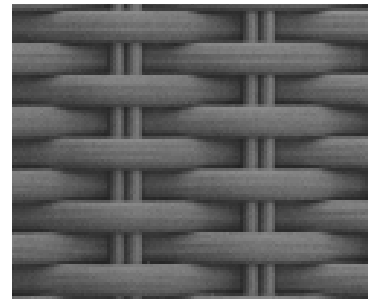
FRAMES: Frame structure is made from commercial grade, non-rusting aluminum. Modular pieces can be joined together in limitless configurations and held together with nylon clips that keep the pieces stationary. **FIBERGLASS** is used underneath top weave for added support.

WEAVE: The "Slate" weave is a polyethylene material with UV inhibitors with no acrylic additives. It has a slight ribbed texture with the dark gray coloration infused throughout the weave core. Each piece is hand-woven usually by one individual- a labor intensive process.

Texacraft® reserves the right to make minor changes or modifications and to discontinue finish color, strap color, fabrics, or styles without notice. Measurements given are approximate. Information provided is as accurate as possible.

SUMMARY SPECIFICATIONS LANTANA
MODEL **M75066** OCCASIONAL TABLE

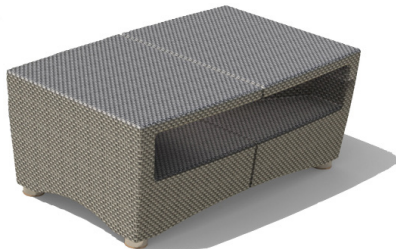
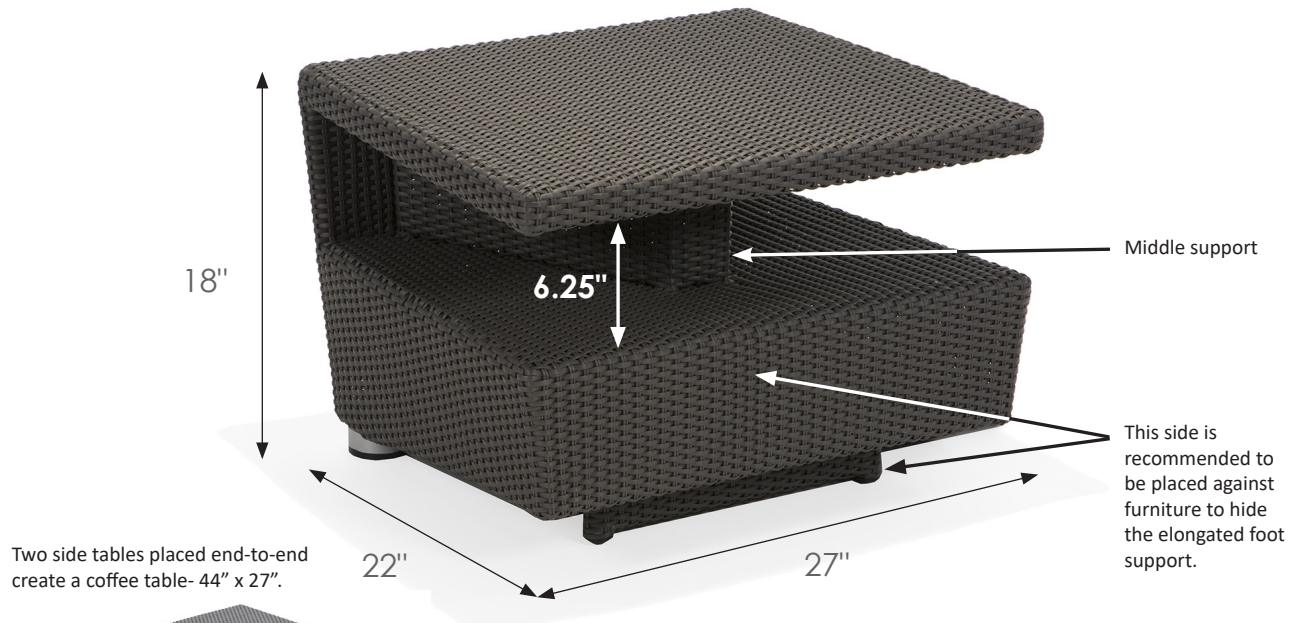
Unit Weight: 20
lbs.



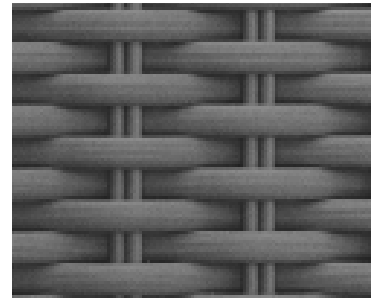
FRAMES: Frame structure is made from commercial grade, non-rusting aluminum. Modular pieces can be joined together in limitless configurations and held together with nylon clips that keep the pieces stationary. **FIBERGLASS** is used underneath top weave for added support.

WEAVE: The "Slate" weave is a polyethylene material with UV inhibitors with no acrylic additives. It has a slight ribbed texture with the dark gray coloration infused throughout the weave core. Each piece is hand-woven usually by one individual- a labor intensive process.

Texacraft® reserves the right to make minor changes or modifications and to discontinue finish color, strap color, fabrics, or styles without notice. Measurements given are approximate. Information provided is as accurate as possible.

SUMMARY SPECIFICATIONS LANTANA
MODEL **M75006** SIDE TABLE

Unit Weight: 31 lbs.

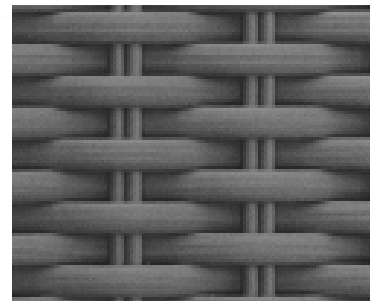
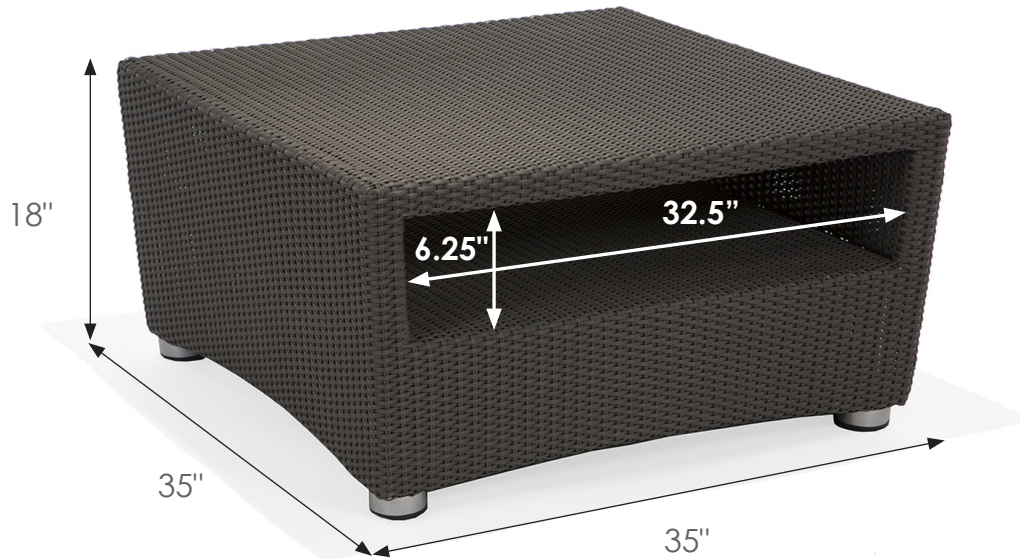


FRAMES: Frame structure is made from commercial grade, non-rusting aluminum. Modular pieces can be joined together in limitless configurations and held together with nylon clips that keep the pieces stationary. **FIBERGLASS** is used underneath top weave for added support.

WEAVE: The "Slate" weave is a polyethylene material with UV inhibitors with no acrylic additives. It has a slight ribbed texture with the dark gray coloration infused throughout the weave core. Each piece is hand-woven usually by one individual- a labor intensive process.

Texacraft® reserves the right to make minor changes or modifications and to discontinue finish color, strap color, fabrics, or styles without notice. Measurements given are approximate. Information provided is as accurate as possible.

SUMMARY SPECIFICATIONS LANTANA
MODEL **M75007** COFFEE TABLE



Unit Weight: 33 lbs.

FRAMES: Frame structure is made from commercial grade, non-rusting aluminum. Modular pieces can be joined together in limitless configurations and held together with nylon clips that keep the pieces stationary. **FIBERGLASS** is used underneath top weave for added support.

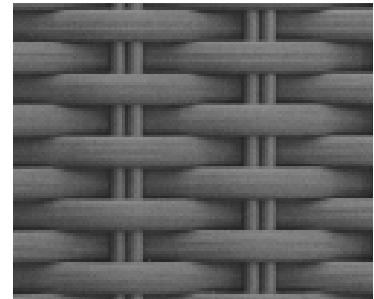
WEAVE: The "Slate" weave is a polyethylene material with UV inhibitors with no acrylic additives. It has a slight ribbed texture with the dark gray coloration infused throughout the weave core. Each piece is hand-woven usually by one individual- a labor intensive process.

Texacraft®/Winston® Contract reserves the right to make minor changes or modifications and to discontinue finish color, strap color, fabrics, or styles without notice. Measurements given are approximate. Information provided is as accurate as possible.

SUMMARY SPECIFICATIONS LANTANA
MODEL **M75042SQ** 42" SQUARE DINING TABLE



Unit Weight: 31 lbs.



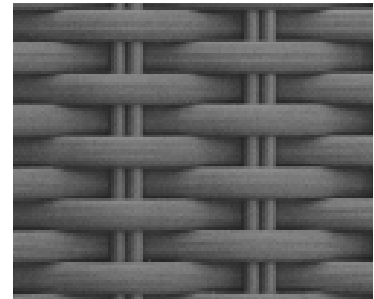
FRAMES: Frame structure is made from commercial grade, non-rusting aluminum. Modular pieces can be joined together in limitless configurations and held together with nylon clips that keep the pieces stationary.

WEAVE: The "Slate" weave is a polyethylene material with UV inhibitors with no acrylic additives. It has a slight ribbed texture with the dark gray coloration infused throughout the weave core. Each piece is hand-woven usually by one individual- a labor intensive process.

Texacraft® reserves the right to make minor changes or modifications and to discontinue finish color, strap color, fabrics, or styles without notice. Measurements given are approximate. Information provided is as accurate as possible.

SUMMARY SPECIFICATIONS LANTANA
MODEL **M75048RD** 48" ROUND DINING TABLE

Unit Weight: 31 lbs.



FRAMES: Frame structure is made from commercial grade, non-rusting aluminum. Modular pieces can be joined together in limitless configurations and held together with nylon clips that keep the pieces stationary.

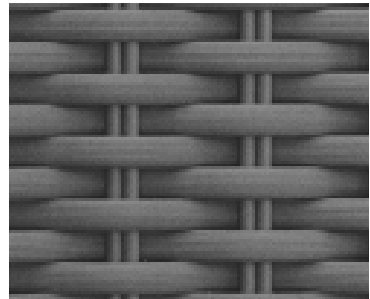
WEAVE: The "Slate" weave is a polyethylene material with UV inhibitors with no acrylic additives. It has a slight ribbed texture with the dark gray coloration infused throughout the weave core. Each piece is hand-woven usually by one individual- a labor intensive process.

Texacraft® reserves the right to make minor changes or modifications and to discontinue finish color, strap color, fabrics, or styles without notice. Measurements given are approximate. Information provided is as accurate as possible.

SUMMARY SPECIFICATIONS LANTANA
MODEL **M75036BRD** 36" ROUND BALCONY TABLE



Unit Weight: 24 lbs.

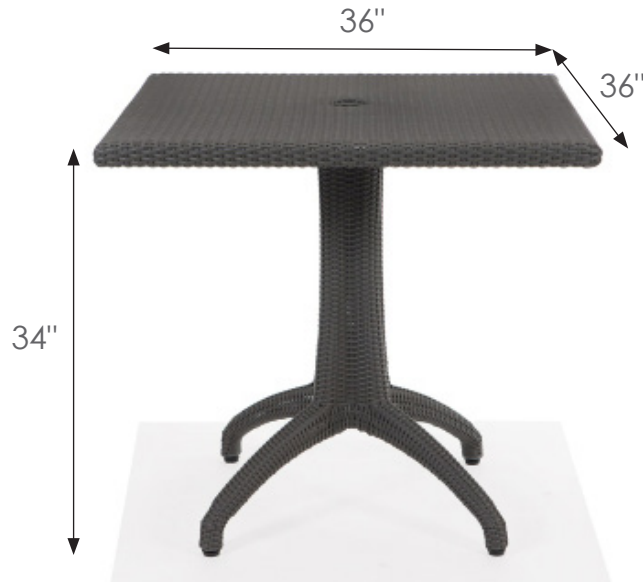


FRAMES: Frame structure is made from commercial grade, non-rusting aluminum. Modular pieces can be joined together in limitless configurations and held together with nylon clips that keep the pieces stationary.

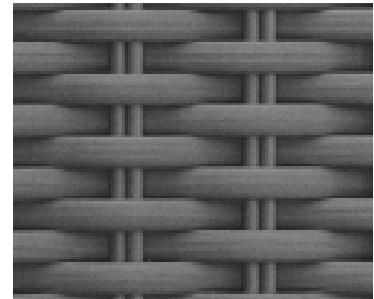
WEAVE: The "Slate" weave is a polyethylene material with UV inhibitors with no acrylic additives. It has a slight ribbed texture with the dark gray coloration infused throughout the weave core. Each piece is hand-woven usually by one individual- a labor intensive process.

Texacraft® reserves the right to make minor changes or modifications and to discontinue finish color, strap color, fabrics, or styles without notice. Measurements given are approximate. Information provided is as accurate as possible.

SUMMARY SPECIFICATIONS LANTANA
MODEL **M75036BSQ** 36" SQUARE BALCONY TABLE



Unit Weight: 27 lbs.



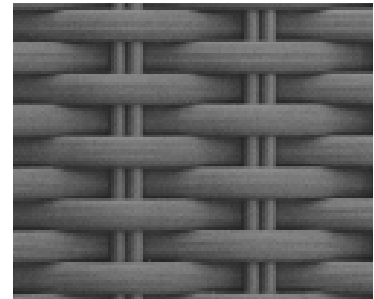
FRAMES: Frame structure is made from commercial grade, non-rusting aluminum. Modular pieces can be joined together in limitless configurations and held together with nylon clips that keep the pieces stationary.

WEAVE: The "Slate" weave is a polyethylene material with UV inhibitors with no acrylic additives. It has a slight ribbed texture with the dark gray coloration infused throughout the weave core. Each piece is hand-woven usually by one individual- a labor intensive process.

Texacraft® reserves the right to make minor changes or modifications and to discontinue finish color, strap color, fabrics, or styles without notice. Measurements given are approximate. Information provided is as accurate as possible.

SUMMARY SPECIFICATIONS LANTANA
MODEL **M75036HRD** 36" ROUND BAR TABLE

Unit Weight: 24 lbs.



FRAMES: Frame structure is made from commercial grade, non-rusting aluminum. Modular pieces can be joined together in limitless configurations and held together with nylon clips that keep the pieces stationary.

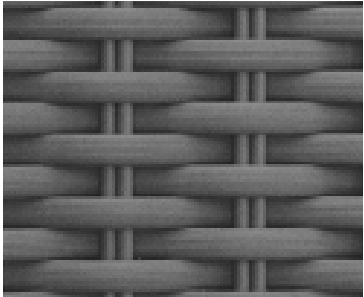
WEAVE: The "Slate" weave is a polyethylene material with UV inhibitors with no acrylic additives. It has a slight ribbed texture with the dark gray coloration infused throughout the weave core. Each piece is hand-woven usually by one individual- a labor intensive process.

Texacraft® reserves the right to make minor changes or modifications and to discontinue finish color, strap color, fabrics, or styles without notice. Measurements given are approximate. Information provided is as accurate as possible.

SUMMARY SPECIFICATIONS LANTANA
MODEL **M75036HSQ** 36" SQUARE BAR TABLE



Unit Weight: 27 lbs.



FRAMES: Frame structure is made from commercial grade, non-rusting aluminum. Modular pieces can be joined together in limitless configurations and held together with nylon clips that keep the pieces stationary.

WEAVE: The "Slate" weave is a polyethylene material with UV inhibitors with no acrylic additives. It has a slight ribbed texture with the dark gray coloration infused throughout the weave core. Each piece is hand-woven usually by one individual- a labor intensive process.

Texacraft® reserves the right to make minor changes or modifications and to discontinue finish color, strap color, fabrics, or styles without notice. Measurements given are approximate. Information provided is as accurate as possible.